

VESETH CATTLE CO.

WITH GUEST CONSIGNOR **SCORE ANGUS**

12th Annual Sale

WEDNESDAY, FEBRUARY 20, 2019

Lunch at 11:00 through 12:45 • Sale starts at 1:00 p.m.

Milk River Pavilion on Hwy 2 East of Malta, MT

Preview All cattle can be seen at Score Feedlot.

Selling

50 Red Yearling Bulls

60 Red Yearling Bred Heifers

85 Red Heifer Calves

30 Short Term Red Cows

15 June Bred Red Cows

25 Registered Black Angus Yearling Bulls



DALE & JANET VESETH

22787 Midale Road • Malta, MT 59538
(406) 658-2504 • djvsth@itstriangle.com

DAVID SCORE

1535 E. Strater Road • Malta, MT 59538
(406) 390-6680 • score_2010@hotmail.com



VESETH CATTLE Co.



WITH GUEST CONSIGNOR SCORE ANGUS

12th Annual Sale WEDNESDAY FEBRUARY 20, 2019

Lunch at 11:00 through 12:45 • Sale starts at 1:00 p.m.

Milk River Pavilion on Hwy 2 East of Malta, MT

Preview all cattle at Score Feedlot.

Selling

- 50 Red Yearling Bulls
- 60 Red Yearling Bred Heifers
- 85 Red Heifer Calves
- 30 Short Term Red Cows
- 15 June Bred Red Cows
- 25 Registered Black Angus Yearling Bulls

Sale Day Contacts

- Collin Gibbs, Auctioneer.....406-939-0645
- Devin Murnin, Western Livestock Journal406-696-1502
- Bill Pelton, Pelton Livestock.....406-671-5100
- Scott Fraser, Frontier Live.....406-860-6548
- Dale & Janet Veseth, Home406-658-2504
- Jim Steele406-654-7090
- Dale Veseth, Cell (before sale day).....406-654-7086

Ultrasound

The bulls will be ultrasounded on January 21, 2019. Weights will also be updated at this time. This information will be available on www.vesethcattle.com and as supplement sheets on sale day.

Liability

All persons who attend the sale do so at their own risk. Veseth Cattle Co. and Consignors assume no liability, legal or otherwise, for any accidents which may occur.

Bidding

The Auctioneer will make the final decision on any bidding disputes.

Retained Interest Bulls

We are retaining 1/2 interest in every bull selling. Buyer gets 1/2 interest, full possession and full salvage value. This allows us to reserve the right to collect semen on any bull in the offering at the buyer's convenience.

Dear Customers, Neighbors and Friends,

When and where can I buy Veseth breeding stock?

Our sale day will be Wednesday February 20, 2019 at the Milk River Pavilion in Malta. (Please see map on back cover). The cattle were videoed on January 25th and displayed on www.frontierlivesale.com. Thanks to Frontier Live Productions! The cattle will be sold on video at 1:00 MST in a live video auction. Registered bidders can bid online or by telephone during the sale. Scott Fraser with Frontier Live Productions can be reached with any questions about online bidding at (406) 860-6548. Dale will be available prior to sale day at (406) 658-2504 to bid for absentee bidders. Collin Gibbs, our auctioneer, can be reached prior to the sale at (406) 939-0645 with any bids or questions. Jim Steele will be available during the sale at (406) 654-7090 for absentee phone bidding. Please contact the above folks prior to the sale. Score Angus with Kendall Koss, Heather Martin and Peigneux Bros have a nice offering of Red and Black Angus bulls and heifers.

What is for sale and what is the base price?

All cattle can be viewed at www.frontierlivesale.com (see page 2 for more information on Frontier Production Sales). There will be weight updates and ultrasound information available on supplemental sheets on sale day and on our website www.vesethcattle.com prior the sale. Veseth Cattle Co will have 50 bulls for sale. The 2019 bull base price is \$2000, including wintering and breeding soundness evaluation at no additional cost. Bulls will be ready for delivery between May 5th and June 1st. Please go through the catalog to see our 2019 offering.

How does the sale work?

On February 20th at 1PM MST we conduct a live auction in catalog order via auctioneer at the Milk River Pavilion. There will be buyer numbers available for prospective buyers in the dining room at the pavilion. A complementary lunch will be available starting at 11:00 AM. All cattle will be started at base price; anything unsold will be available at private treaty. The bulls will be sold individually and the females by gate cut based on the buyer's head count needs. All females will sell FOB (freight on buyer) for delivery as soon as possible after the sale. The bulls will be wintered and evaluated for breeding soundness and ready for delivery on May 5th - June 1st. Veseth Cattle Co provides free delivery of bulls to central points up



This catalog is proudly produced in Montana and printed on FSC certified, FSC 10% PCRF, American made paper.



to 300 miles. This way bulls can be delivered in truckload lots. Bulls sold over 300 miles will be at cost. We have a long-distance hauler we contract with for cattle sold out of Montana.

Ultrasound: The bulls will be ultrasounded on January 21st; weights will be updated at this time. This information will be available on the website, www.vesethcattle.com, and as supplement sheets on sale day.

Are there discounts on cattle?

There are discounts. On bulls, 50% of the purchase price is due on sale day, with the remainder due at delivery. Discounts will be taken out of the final payment. If paid in full, the discounts will be taken out on sale day. Females will be paid in full after the sale.

- Volume Discount: Every bull bought after the first bull will receive a 1% discount on each additional bull, with a maximum of 10%.
- Young Rancher Discount: I sympathize with young people trying to get a start in agriculture today. It was tough when I started and it is only tougher now. Anybody 25 years and younger gets a 10% discount on all breeding cattle purchases. Anybody 26 to 35 years old gets a 5% discount on all breeding cattle purchases. This is for young people buying in their own name and brand and not for old established ranches. Veseth Cattle Co puts a maximum discount of \$2000 per buyer per year on young rancher discounts.

What traits do we select for in the cowherd?

First, we select for functional traits including disposition, udder quality, feet and legs, fleshing ability and moderate mature size. Secondly, we select for calving ease, you will find most of the AI and natural service sires we use are in the top percentages within their breed for calving ease. On the ranch, the cow is on her own. In the spring I go through and tag once per day on everything but 2-year-old heifers. Next, we select for a moderate, maternal cow with longevity (stayability) that lives on minimal inputs. Our cows usually graze year-round with only mineral, and protein supplement during the winter in semi-arid conditions in the Missouri River breaks. Fourth, we put as much growth into the cattle as we can without wrecking functional traits, calving ease and moderate sized cows with excellent maternal abilities and lastly, we try to improve carcass traits when we don't wreck the rest of the selection criteria.

How do we make genetic progress?

The ranch has AI'ed on and off for over 40 years. For the last twenty years, we have AI'ed 6,000+ cows to proven bulls that are producing herd sires across the country in reputation breeder's herds. Our average cost per AI calf on the ground is 100+ dollars.

Only 20% of the male calves born on the ranch will be sold as bulls. We start off saving 130 bull calf prospects from our best cows sired by the best proven AI bulls in the industry and over half of those bulls are culled for 20 separate selection criteria along the way.

The ranch tries to keep good records, recording weights and frame scores on calves and cows every year along with cow body conditions scores at preconditioning, and udder and disposition scores at calving; we record lifetime production on the cows each year, I get a ranch list from my best cow to the worst cow in the herd. We haul the best cow off to embryo transfer to produce herd bulls for the ranch and we haul our worst cows off to become hamburger. Everybody else fits in between.

I do cut some corners, most of the cattle at Veseth Cattle Co are not registered Red Angus. I don't have time or resources to accomplish that goal. The ranch does have one partner that have bought and brought the ranch some very nice registered Red Angus cows. This portion accounts for about 50 head of the 650+ cowherd and there will be purebred cattle represented in the sale.

The ranch also utilizes some cross breeding. We keep the cow herd predominantly Red Angus for their disposition, maternal traits, pigmentation, adaptability to our limited resource environment, and marketability. Our cross-breeding program focuses on maternal breeds as that genetic part of hybrid vigor pays the highest dividends with a 25% increase in life time production for the crossbred cow. Hybrid vigor, breed complementarity and a larger gene pool to select from can gain the rancher 30 to 40 lbs. per every 100 lbs. of straight bred calf raised on a ranch.

Bull birth weights: We only weigh the 2-year old's calves at birth. The 2-year old cow's calves are weighed on a Tru-Test scale. The cow bulls are hoof taped due to time factors and land topography; Most years I tag everything myself. The hoof tape is an estimate of birth weight; I think it is usually within 5 lbs. of the actual birth weight.

Our bulls are smaller than bulls at most other sales. There are good reasons why they are smaller at this time in their lives. Our bulls are born in April, not in January. These cattle are moderate framed cattle. Elephant cattle are bigger and have higher maintenance requirements. Our cattle live in the Missouri River breaks, without mountain meadow or irrigated pasture. We usually graze our cow herd year-round without harvested feedstuffs i.e. hay, haylage or silage, except in the worst conditions. If the bulls gain too much on test we put them on a diet so we don't wreck their feet. I believe that the overfeeding of young bulls and selling obese bulls reduces the productive life of bulls by 25% to 50%. We have a lot of customers that report using Veseth Cattle Co bulls until they are 8 or 9 years old.

A word on age advantaged bulls. Bulls will get bigger if they are not used until they are 3 years old, but using younger bulls gives you potentially more breeding seasons and less bull depreciation/calf. Younger bulls may need additional care while they are growing, but it is still cheaper than buying expensive older bulls. These are working cattle for working ranchers. It has been a mild winter and this will reflect on cattle condition and size.

Is Beef Cattle Temperament Important in Your Operation?

"One recent study over 47,000 feedlot cattle were evaluated for average daily gain, feed conversion, morbidity, mortality, quality grade and tenderness. This study showed docility is worth over \$70/head".
The Profit Picture: Sept 2018 by
Dr. Timothy Page, Animal Science
Professor, Louisiana State University.

Thank you! Dale & Janet – Fred & Jackie and the whole crew!

VESETH CATTLE CO. CUSTOMER NEWS

What's in your wallet? Have input cost, low cattle prices, drought and hard winters taken a bite out of your cash flow? One of the easiest ways to keep money in your wallet is to go to the Veseth Cattle Co bull sale! Veseth Cattle Co bulls averaged \$2525 in 2018 before discounts. Northern Ag. Network reported in their Montana and Wyoming coverage area that the average price was \$5073 per bull on 1756 head of Red Angus bulls. They also reported Black Angus bulls average \$4990. If you want to call the Veseth Cattle Co sale – buy one- get one free or a 2 for 1 sale. That is what it is.

Veseth Cattle Co donated a steer to the Montana State University steer of the year (SAY) program (Please see information on SAY in catalog). That was the SAY program steer in our 2019 advertisement. He won the carcass competition in a test of 29 steers and was 2nd in the average daily gain at 4.1 lbs/day on test.

We had 5 Veseth Cattle Co steers represented in 3 different 4-H County Fairs. Cora Baeth's steer won the rate of gain contest at 3.60 lbs/day at the Gallatin Co. Fair against 52 steers. All 5 Veseth steers got blue ribbons in the live evaluation and graded choice on the rail.

The ranch also retained ownership on 189 steers sent to Lincoln Co. Feeders at North Platte, NE. All of these steers were sold on the rail. The steers gained 4.11 lbs/day on average; converted on a dry matter basis at 5.53. The lot had a death loss of 1.1%. Cost of gain was \$.68/lb with everything included. The cattle were harvested in 4 groups; 74% of the cattle graded Choice, with 25% of the cattle selling on a premium choice marbling grid. The average yield grade was 3.2 for the group. Our cattle marble very well for the last 5 years the average ultrasound marbling score on our yearling bulls has been Choice – with .10 of backfat and exterior rump fat. Veseth Cattle genetics can compete with the best in the industry. I do not know of any bulls, any breed, anywhere that would make Choice with .1 inches of external fat. Another thing about age advantaged bulls, the older the bulls are when mixed in with the ranch bull herd the more fighting!!

Dale, Janet & crew



Bidding on www.frontierlivesale.com is as easy as 1,2,3!

- 1. Register as a buyer before the sale at www.frontierlivesale.com !*
 - 2. Login on sale day with the credentials provided at registration!*
 - 3. Watch the sale and BID LIVE from the comfort of your own home!*
- Call 866-621-5546 for tech help.*



High Performing Bulls (Group 1)

Group 1 will include the high performing bulls from all groups.

These bulls will sell first in the sale.

Calf Info			Calving				Post Calving Info						Dam Info				Preg-Testing				
Sale Lot	Calf ID	Calf Sire ID	Calf Birth Date	Calf Birth Wt.	Calving Ease	Cont Group (CG)	Nursing Adj 205 Day Wt.	Nursing Ratio CG	Jan 21st Wght	Hip Ht (in) 1/4	Scrotal Circ (cm) 1/4	Poll Status	Avg Gain Wean 1/21	Cow ID	Cow Sire ID	Cow Disp	Cow Udder	Cow Wgt 10/3 & 10/12	Cow Hip Ht (in.)	Cow Body Cond	Bred Vs. Open
1	288/132	PB	4/14/18	84	1	1	740	125.5	740	47	35	P	1.56	C41	BP	10	10	1130	52	5	Bred
2	29	RE	3/18/18	86	1	1	724	122.7	880	48	33	P	2.24	D17	RD	10	10	1105	54	4	Bred
3	17	297	3/16/18	90	1	1	684	116.4	815	48	32.5	P	1.95	D211		10	10	1275	56	4	Bred
4	79	BN	3/28/18	83	1	1	685	116.1	825	49	35	SC	2.16	C158	MS	9	10	1130	56	5	Bred
5	70	BN	3/26/18	93	1	1	654	110.8	745	49	33	P	1.57	B73	RO34	10	10	1190	55	3	Bred
6	107	CBE	4/2/18	90	1	2	689	108.3	800	48	37	P	1.94	KHR A316 OST		10	10	1340	58	6	Bred



Calving Ease (CE) Simmental X Sire (Group 2)

WBF REST EASY U085

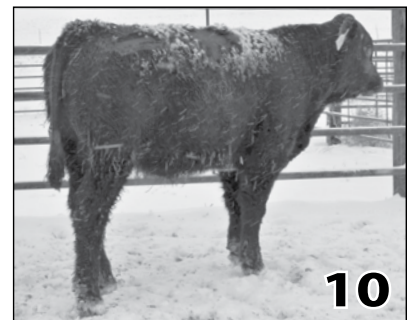


American Simmental Association Reg.# 2472430 Veseth herd abbreviation RE. This is an Allied Genetic Resource Bull bred and owned by Wildberry Farms, Hanover, Illinois. How do you get to be the lead off sire group in the Veseth Cattle Co sale? It is easy, just out perform everything else. I think RE is the best example of a curve bender that I have used in my AI program. On two calf crops we have assisted 3 out of 42 for 7.25% of RE calves. That is comparable to our best calving sires like Red Angus Night Calver (NC) and Red Angus Above & Beyond (AB). The two best calving ease sires in over 100 bulls tested through AI. RE calves perform better than Redemption (RD) calves at weaning. RE calves are also very vigorous at birth. And we still held off on making a large semen purchase until we had RE daughters in production. They have beautiful udders, are moderate thickmade females. We did not have an open out of RE in the two year old breed back. When I called Marty Ropp to buy out the

semen inventory on RE, he said you must have seen his daughters in production. In the Simmental Data Base RE has 342 daughters. We have used 130 units of semen on this sire to date with 150 units in inventory for the future and have 4 sons retained for in herd use. RE is in the top 1% of all Simmental Sires for calving ease, milk, marbling and the Simmental Maternal Index. Rest Easy is in the top 2% for daughter's calving ease and the top 10% for Stayability. When you take into account the amount of milk his daughters produce with stability in the herd and udder quality. RE is a giant maternal bull! The RE's are giant maternal cattle!

CE	BW	WW	YW	ADG	MCE	Milk	MWW	STAY	DOC	CW	YG	MARB	BF	REA	SHR
24.3	-8.3	35.4	48.7	0.08	10.2	36.9	54.5	20.8	-8.2	21.2	-0.19	0.51	-0.065	0.24	-0.33

Calf Info			Calving				Post Calving Info						Dam Info			Preg-Testing					
Sale Lot	Calf ID	Calf Sire ID	Calf Birth Date	Calf Birth Wt.	Calving Ease	Cont Group (CG)	Nursing Adj 205 Day Wt.	Nursing Ratio CG	Jan 21st Wght	Hip Ht (in) 1/4	Scrotal Circ (cm) 1/4	Poll Status	Avg Gain Wean 1/21	Cow ID	Cow Sire ID	Cow Disp	Cow Udder	Cow Wgt 10/3 & 10/12	Cow Hip Ht (in.)	Cow Body Cond	Bred Vs. Open
7	19	RE	3/15/18	76	1	1	656	111.2	805	46	28	P	2.07	D38	RK/NK	10	9	1025	53	4	Bred
8	41	RE	3/20/18	73	1	1	641	108.6	715	45	32	P	1.59	D195		10	10	1015	53	4	Bred
9	20	RE	3/16/18	70	1	1	578	98.8	740	47	31	P	2.11	D70	RK/OLY	10	10	916	52	5	Bred
10	38	RE	3/20/18	71	1	1	576	97.7	690	46	31	P	1.81	D119		10	10	1125	55	5	Bred
11	31	RE	3/20/18	73	1	1	564	95.6	685	46	32	P	1.85	D71		10	9	1255	58.5	4	Bred
12	28	RE	3/17/18	80	1	1	552	93.6	645	45	29	P	1.57	D201		10	10	1010	52	4	Bred
13	60	RE	3/23/18	73	1	1	525	89.0	680	45	34	P	2.11	D5	NC/KHR	10	10	1145	56	5	Bred
14	16	RE	3/14/18	76	1	1	515	87.3	690	46	35	P	2.11	D176		10	10	966	51.5	4	Bred



CE Red Angus (Group 3)

There are four sires in this group. I penned all the CE bulls together for my buyers to compare sire groups for the best red calving ease sires in the industry. I don't know where else you can find this many calving ease sires with this many calves.

VESETH 297 BULL



Coming 8 yr old bull; 2000 lbs; 44.5 SC; highest BCS in Veseth herd bulls.

Veseth Herd Abbreviation is 297 is a home raised bull out of the Becton Lancer 297 sire that worked so well at Bowles Red Angus at Chinook and my maternal line 1 cow family that has left 4 herd bulls on the ranch including Burlington Northern (BN). We are assisting 14.2 % of the 297 calves out our 2 year old heifers. His calves performance at weaning was the highest out of 13 sire groups. That is the 1st time in 20 years and over 100 sires that a calving ease bull has topped all sires for progeny weaning weight performance; so, we collected 297 again. He will be 8 years old this spring and has perfect feet. Veseth 297 is moderate to small frame. He also produced 300 units/sample at the AI stud. He will be on display at the bull sale.



297's Dam

BROWN JYJ REDEMPTION Y1334



Redemption (RD) Genex Sire Reg # 1441805. Veseth Herd abbreviation is RD. The Red Angus Association registered 1166 calves by RD in 2018. He has been the most used Red Angus sire for the past 5-6 years. To date we have assisted 9 out of 53 of his calves for 17%. RD's calves have always weaned at the top for a heifer bull. RD calves have topped our bull sales for the last 2 years. Redemption is in the top 7% for ADG; the top 8% for cow efficiency; top 10% for birth weight; top 14% for marbling and Grid Master EPD's. RD is in the top 16% for yearling weight, 20% for carcass weight and the top 25% for Calving Ease. This is his 3rd calf crop for the ranch and they are good cattle.

HB	GM	CE	BW	WW	YW	MM	ME	HPG	CEM	STAY	Marb	YG	CW	REA	BF
187	51	15	-4.4	65	113	19	-11	4	8	17	0.64	0.15	27	-0.11	0.02

LSF SR R VICTORY 3013A



RAA Reg # 1623923. Veseth Herd abbreviation is VIC. This is a Ludvigson Stock Farm bred sire. This is his second calf crop at the ranch. VIC calves well; we have assisted 3 out of 20 calves. VIC's calves are moderate and good gainers. We expect Victory daughters to be his greatest contribution to our program. VIC is in the top 1% for maternal calving ease, top 5% for direct calving ease; top 6% for birth weight and the top 9% for the Maternal Herdbuilder Index.

HB	GM	CE	BW	WW	YW	MM	ME	HPG	CEM	STAY	Marb	YG	CW	REA	BF
230	50	19	-5.3	59	98	27	7	13	15	19	0.37	0.1	13	0.04	0.04

BROWN BETTER ANSWER Z 7257



Red Angus Reg # 1550475. Veseth Abbreviation is BA. BA is a Genex Bull bred by R.A. Brown in Throckmorton, Texas. This year will be his second calf crop at the ranch. We have assisted 5 out of 28 calves for 18%. Better Answer is a Red Angus outcross bull going back to SAV Final Answer. They are thick made, moderate cattle that are darker red than average. BA is in the top 6% for birthweight and maternal calving ease; top 7% for direct calving ease; top 14% for heifer pregnancy and 15% for fat thickness in Red Angus Sire EPDs.

HB	GM	CE	BW	WW	YW	MM	ME
199	47	18	-4.9	47	80	21	-1
HPG	CEM	STAY	Marb	YG	CW	REA	BF
15	11	17	0.26	0.12	6	-0.35	0.01

Calf Info			Calving			Post Calving Info				Dam Info				Preg-Testing							
Sale Lot	Calf ID	Calf Sire ID	Calf Birth Date	Calf Birth Wt.	Calving Ease	Cont Group (CG)	Nursing Adj 205 Day Wt.	Nursing Ratio CG	Jan 21st Wght	Hip Ht (in) 1/4	Scrotal Circ (cm) 1/4	Poll Status	Avg Gain Wean 1/21	Cow ID	Cow Sire ID	Cow Disp	Cow Udder	Cow Wgt 10/3 & 10/12	Cow Hip Ht (in.)	Cow Body Cond	Bred Vs. Open
15	21	BA	3/16/18	76	1	1	631	107.0	770	46	33	P	1.98	D16	RE/BI	9	9	1200	54	5	Bred
16	30	L7	3/20/18	71	1	1	631	106.9	710	50	33	P	1.62	D198		10	10	1100	54	5	Bred
17	18	RD	3/15/18	81	1	1	619	104.8	770	46	33	P	2.05	D93	297	9	9	1220	56	5	Bred
18	5	RD	3/4/18	75	1	1	611	103.5	790	45	35	P	2.06	D179	LET/NK	10	10	1020	50	5	Bred
19	25	297	3/17/18	76	1	1	607	102.9	685	46	31	P	1.52	D200		10	9	986	54	4	Bred
20	13	297	3/14/18	70	1	1	595	100.8	715	76	32	P	1.78	D13	RD	10	10	1165	54	5	Bred
21	40	VIC	3/20/18	77	1	1	588	99.7	695	46	30	P	1.77	D26	RE/ET	10	10	970	53	3	Bred
22	4	RD	3/11/18	76	1	1	580	98.2	810	48	32	P	2.54	D155		10	10	1120	54.5	5	Bred
23	3	RD	3/9/18	74	1	1	576	97.7	785	46	35	P	2.35	D62	KG	10	10	974	53	5	Bred
24	11	RD	3/14/18	75	1	1	540	91.6	705	46	32	P	2.06	D104		10	10	1095	54.5	4	Bred
25	22	VIC	3/16/18	75	1	1	516	87.5	620	45	32	SC	1.61	D55	KG	10	10	1030	53	4	Bred



Maternal Legends (Group 4)

H2R PROFITBUILDER B403

Red Angus Reg # 1683223. Veseth Herd Abbreviation is PB. We sampled Profitbuilder (PB) for the first time in 2018. His phenotype, EPD profile and pedigree all pointed to an exceptional sire. PB was second in the RA breed for registrations in 2018 with 1092. His average nursing ratio in our herd was the 3rd top at 1.03; PB is in the top 2% for Marbling, top 3% for Grid Master, top 4% for weaning weight, 5% for yearling weight, 11% for average daily gain and 18% for carcass weight.



HB	GM	CE	BW	WW	YW	Milk	ME
162	54	12	-2.6	79	125	13	-4
HPG	CEM	STAY	Marb	YG	CW	REA	BF
10	6	13	0.81	0.27	28	-0.18	0.05

BROWN GOLD MINE A7610

RAA Reg # 1607046. Veseth Abbreviation is GM. Gold Mine (GM) is bred by RA Brown ranch, Throckmorton, Texas and owned by American Breeders Service (ABS). We sampled this bull's sire, "the Iron Ore" sire from Australia, he was doing a great job for us but we couldn't get any more semen from him. We used the last of our Iron Ore semen in the ranch embryo transfer program. Here are the first Iron-Ore Grandson's on the ranch. This was the 2nd high weaning ratio group in the young cows. GM is in the top 2% of the breed for heifer pregnancy, top 4% of the breed for Grid Master, top 5% of the breed for marbling and carcass wt. The top 13% for ADG, and YWT, top 16% for WWT, top 19% for the maternal herd builder index and the top 25% for REA.



HB	GM	CE	BW	WW	YW	Milk	ME
207	53	12	0.1	70	115	16	3
HPG	CEM	STAY	Marb	YG	CW	REA	BF
18	6	17	0.75	0.21	38	0.11	0.05



C-BAR EVOLUTION 107Y

RAA Registration # 1474506. Veseth Abbreviation is CBE. C-Bar Evolution (CBE) was bred by C-Bar Ranch, Kansas and owned by ABS. We sampled CBE because of his tremendous phenotype, balanced EPD profile and had heard he was making some tremendous cows with an outcross pedigree. CBE is in the top 14% of the Red Angus breed for ADG and top 25% for birth weight.



HB	GM	CE	BW	WW	YW	Milk	ME
151	48	14	-3.1	59	103	24	0
HPG	CEM	STAY	Marb	YG	CW	REA	BF
12	7	13	-0.02	0.18	24	-0.09	0.04

Calf Info

Calving

Post Calving Info

Dam Info

Preg-Testing

Sale Lot	Calf		Calf Birth Date	Calf Birth Wt.	Calving		Nursing		Jan		Scrotal		Avg Gain 1/21	Dam Info				Preg-Testing			
	Calf ID	Sire ID			Calving Ease	Cont Group (CG)	Adj 205 Day Wt.	Ratio CG	21st Wght	Hip Ht (in) 1/4	Circ (cm) 1/4	Poll Status		Cow ID	Cow Sire ID	Cow Disp	Cow Udder	Cow Wgt 10/3 & 10/12	Cow Hip Ht (in.)	Cow Body Cond	Bred Vs. Open
26	151	GM	4/6/18	75	1	1	683	115.8	735	46	32	P	1.69	C75	ACV	10	10	1135	53	4	Bred
27	9	297	3/12/18	84	1	1	658	111.5	795	47	32	P	1.92	D56	RK	10	10	962	50	4	Bred
28	95	PB	3/31/18	86	1	1	654	110.9	780	45	31	P	2.06	C118	RK/ML	10	10	1385	54.5	5	Bred
29	66	GM	3/26/18	86	1	1	639	108.2	755	46	30	P	1.87	C20	NC	10	10	1120	53.5	4	Bred
30	136	PB	4/6/18	94	1	2	674	106.0	695	46	33	P	1.21	A289		10	10	1365	56	5	Bred
31	32	VIC	3/19/18	83	2	1	536	90.9	725	45	33	P	2.05	DW6221		10	10	960	52	3	Open



Composite Bulls: (Group 5)

Burlington Northern, Bar CK Hunter, Veseth Top Performer & CHRK Apprentice and Mature Multiple Sires (MMS). • Composite bulls from our best proven cows.

“The use of composite bulls makes crossbreeding simpler” Burke Teichert, Strategic Planning Column, Beef Magazine

BURLINGTON NORTHERN

Veseth Herd Abbreviation is BN. We used Burlington Northern naturally for 6 years and this is his third AI calf crop. These cattle are the most complete cattle on the ranch. You might ask why there are always so many BN calves in the offering. We use 50 units of semen out of our proven herd sires every year. But Mother Nature and the ranch are continuously culling and more BN calves make it into the bull pens than any other sire group. We have retained 5 sons for in herd use.



BN Maternal Brother

BAR CK HUNTER 3006A

¾ SM x ¼ AN Sire. American Simmental Association Reg# 2839889. Veseth Herd Abbreviation is HTR. HTR is a homozygous polled bull bred by Bar CK Cattle of Culver, Oregon. I tried to buy the bull but he sold to Lorenzen Ranches of Pendleton, Oregon for \$13,500. We sampled HTR in our AI program and here are his first calves. This bull has an outstanding EPD profile. HTR will calve easily and they are moderate, thick and like to eat. We sent one of his steer calves to the SAY program in Bozeman this year. We expect great females out of this bull. HTR is in the Top 1% of the Simmental data base for CE, BW, Maternal CE, Stay, and REA. The top 2% for maternal index, i.e. API; The top 4% for Marbling; the top 5 % for docility. The top 9% for CW, top 10% for Milk and the top 20% for terminal index. We have bought semen on this bull for next year’s breeding season.



A rare Combination of calving ease and heavy muscling.

CE	BW	WW	YW	ADG	MCE	Milk	STAY
20.3	-3.3	62.4	90.1	0.17	12	26.6	22
DOC	CW	YG	Marb	BF	REA	SHR	API
14	39.5	-0.49	0.31	-0.061	1.44	156.9	75.5

VESETH TOP PERFORMER

Veseth abbreviation is TP. TP was a calf bred and born on the ranch. He excelled in every test in which he was tested. These are his in herd ratios: BW 92, WW 109, YW 118, WDA 113, REA 111, IMF 114, Semen Quality 114, SC 107 and has an excellent disposition. He was out of the Laubach Timeberlake ET (RA) group of bulls who performed so well for us out of an ER Big Sky daughter (SM). These are his first calves: they are small at birth, thick made, moderate and darker red. Owen DeBrucker bought this bull in 2017 bull sale.



SC 38.5 at 1 year.

CHRK APPRENTICE

Mature Multiple Sire Breeding Group

Beefmaster Breeders United EPDs. Reg# C985938. Veseth abbreviation is CM. I contract AI bred some cows for Cliff and Anna Merriman. This is Cliff's Grandad's bull. I saw this as an opportunity because the ranch breeding program was patterned after Tom Lasater's "5 Commandments of Livestock Breeding". This was the philosophy that Lasater used to found the Beefmaster Breed. These calves were extremely vigorous and hardy. I watched one calf be born and get up & suck at -2F degrees with a breeze. We didn't lose a CM calf to cold in the spring of 2018! So we kept some calves as bulls. CM is in the top 4% for the maternal index, top 10% for BW, WW, YW and terminal index, the top 15% for SC, direct calving ease and maternal WW.



HB	GM	CE	BW	WW	YW	Milk	ME
na	na	4.6	-1.1	38.6	59	9.1	2.5
HPG	CEM	STAY	Marb	YG	CW	REA	BF
na	na	na	na	0.21	38	0.11	0.05

VESETH MMS

Veseth abbreviation for Mature cows multi-sire breeding group (MMS). This is the multiply sire group with the mature cows in the Missouri River breaks. We cull this group very hard. If they are not exceptional they are steers.



Calf Info				Calving			Post Calving Info						Dam Info				Preg-Testing				
Sale Lot	Calf ID	Calf Sire ID	Calf Birth Date	Calf Birth Wt.	Calving Ease	Cont Group (CG)	Nursing Adj 205 Day Wt.	Ratio CG	Jan 21st Wght	Hip Ht (in) 1/4	Scrotal Circ (cm) 1/4	Poll Status	Avg Gain Wean 1/21	Cow ID	Cow Sire ID	Cow Disp	Cow Udder	Cow Wgt 10/3 & 10/12	Cow Hip Ht (in.)	Cow Body Cond	Bred Vs. Open
32	196	MMS	4/18/18	81	1	2	744	116.9	845	50	34	P	2.24	61Y		10	10	1205	57	4	Bred
33	187	MMS	4/14/18	85	1	2	724	113.8	785	49	31	P	1.80	223Y	MS	10	10	1335	57	3	Bred
34	152	HTR	4/5/18	80	1	1	662	112.3	760	47	31	P	1.97	C13		10	10	1445	59	5	Bred
35	80	BN	3/28/18	89	1	1	661	112.1	800	47	27	P	2.11	C153	DA/297	10	10	1145	53	5	Bred
36	170	MMS	4/10/18	94	1	2	693	109.0	825	51	33	P	2.17	62Y		10	10	1300	56	5	Bred
37	139	MMS	4/7/18	85	1	2	662	104.2	730	47	33	P	1.57	340Y	MS	10	10	1295	55	5	Bred
38	173	MMS	4/11/18	70	1	2	652	102.5	745	47	32	SC	1.85	A208		10	9	1470	58	5	Open
39	180	MMS	4/13/18	75	1	2	643	101.0	645	48	34	P	1.20	Z193		10	9	1240	54	5	Bred
40	51	HTR	3/30/18	90	1	2	643	101.0	855	48	36	P	2.43	A69		10	8	1345	57	5	Bred
41	67	BN	3/26/18	85	1	1	592	100.4	690	47	33	P	1.67	C63		10	10	1225	56	4	Bred
42	74	CM	3/27/18	80	1	1	591	100.2	740	47	35	P	1.95	BW313MM/OLY10		9	10	1095	53	3	Open
43	181	MMS	4/13/18	75	1	2	637	100.2	720	49	34	P	1.78	81Y		9	10	1305	58	5	Bred
44	119	MMS	4/5/18	80	1	2	634	99.7	715	46	34	P	1.59	Z78	MS	9	10	1230	54	5	Bred
45	54	MMS	3/31/18	85	1	2	617	97.0	830	48	35	P	2.43	Z129	MS	10	10	1375	58	5	Bred
46	69	BN	3/26/18	80	1	1	562	95.3	695	47	32	P	1.77	B28	VET	10	10	1160	52	5	Bred
47	334	TP	4/10/18	80	1	1	562	94.9	735	47	34	P	2.00	A13	HMH/OO10	10	10	1160	52	5	Bred
48	118	MMS	4/4/18	85	1	2	599	94.2	735	47	34	P	2.01	DW248	MS	10	10	1625	58	6	Bred
49	102	BN	4/1/18	85	1	2	586	92.2	715	47	33.5	P	1.88	B292		10	10	1245	54	5	Bred
50	106	BN	4/2/18	90	1	2	584	91.9	740	46	34	P	1.98	A260	OO	10	10	1130	54	5	Bred



Heather Martin (Group 6)

MARTIN GLADIATOR 800



RAA Reg # 4027198 This Bull will help your quality for the yellow dangle tag program. Also the allied green tag program. Please write the check for this bull to Heather Martin

HB	GM	CE	BW	WW	YW	MM	ME	HPG	CEM	STAY	Marb	YG	CW	REA	BF
181	51	14	-2.8	66	107	24	0	12	9	15	0.55	0.11	23	0.03	0.03

For more information Contact
Heather Martin • 406-654-7664

*“Will a heifer calf born in 2018 become, along with her herdmates, the most profitable cow in your herd?
An analysis of past and present cattle cycles suggests this could be the case.”
Harlan Hughes, Market Advisor, Beef Magazine July 30, 2018.*

All Females per Group will be sold on a gate cut basis. Females will be auctioned off until the group is sold.

15 Veseth Bred Heifers (Group 7)

AI bred and cleaned up for 30 days with natural service. To start calving March 5, 2019. Bred heifers historically weigh 1100+ lbs. Base Price is \$1450.



47 Veseth Bred Heifers (Group 8)

These heifers are bred natural service to CE Veseth Bulls to start calving March 25, 2019 for 45 days. The bred heifers historically weigh 1100+ lbs. Base Price is \$1450.

70 Red Angus Heifer Calves (Group 9)

This group of heifer calves have been banged and given estrumate (guaranteed open). These heifers will weigh 700 lbs on sale day. If the buyer takes all the heifers; the buyer can sort 5 head to even up their purchase. Base Price is \$925.



15 Consigned Red Angus Heifer Calves from Peigneux Bros Ranch (Group 10)

These heifers are banged and have also been given estrumate. The Peigneux Bros are longtime customers of Veseth Cattle and traditionally wean the heaviest calves in the country. These heifers weighed 790 lbs last year. We ask the purchaser to make the check for these heifers to Peigneux Bros. Base Price is \$1000/hd. Randy Peigneux is 406-344-2564.

10 June Calving Cows (Group 11)

We had a June 1st cutoff date on the cowherd. The last calf for these cows could be June 24th. These cows are cut right from the herd by calving date, so there will be young cows in the mix. We will have an age sheet on the pen. These cows have been in the feedlot and should weigh 1450 lbs. Base Price is \$825.

35 Short Term Cows (Group 12)

These are aged cows that start calving April 5 thru May 31st. The ranch has a mandatory culling age of 11 years old. These cows have been in the feedlot and will weigh 1450 lbs. Base Price is \$800/hd.

2019 Selection index introduction

There is a new tool emerging in expected progeny difference (EPD) estimates. This is a selection index where several traits are weighted by economic value of the traits to the rancher. This gives an accumulative value for several traits in one estimate. There have been two different indexes used to date. The first is a maternal index which evaluates fertility, growth and carcass traits for ranchers that will retain replacement females and market the other progeny on an end point carcass grid. The second type of index is the terminal index where all progeny are marketed on a grid end point basis. Veseth Cattle Co has found that sires that excel in the maternal index work the best for our breeding program. This has simplified our sire selection process and improved our breeding program results. So we asked "Beef Magazine" if we could reprint an article on selection indexes for our customers. This article talks about the different names for maternal indexes for the respective breeds EPDs.

Here's why you should use indexes rather than single-trait EPDs

Impact your profitability with selection indexes.

Apr 26, 2018

By B. Lynn Gordon

Beef producers raise cattle for many reasons, But without profitability, a production system is not viable or sustainable.

Related: 2018 BEEF Seedstock 100

At least that what Darrh Bullock thinks. "There are different methods of how we reach profitability, but it is the end goal," the animal science professor at the University of Kentucky told producers on a recent webinar hosted by the National Cattlemen's Beef Association (NCBA) and eBEEF.org. The webinar — Show me the money, EPDs for profit — discussed the advancement of genetic evaluation from single EPD traits to the use of a selection index. One way to define profitability is net return. Among the ways to increase net return and impact profitability are selection indexes, the genetic evaluation tool producers can use to help with multiple trait selection.

Related: Do indexes, EPDs and genomics really work?

"A selection index combines several traits into one value to allow genetic improvement for net return," Bullock says. "We take the economic weight of each trait in the index (e.g., calving ease, weaning weight and milking ability), multiply it by the corresponding EPD and add them all together, the result is an expected dollar value difference." In the case of determining which bull to purchase, comparing the selection index of bull A to bull B means you would be comparing the expected dollar value difference per calf produced by the bulls, explains Bullock.

EPDs focus on production traits expressed in pounds, percentages, centimeters, etc., and selection indexes are measured in dollars of economic valuation, commonly known as economic selection indexes. Types of selection indexes: Jared Decker, animal science professor from University of Missouri, joined Bullock to further explain selection indexes. Decker noted the three types of selection indexes currently used in the beef industry:

Terminal index: A terminal index is utilized when income is based on feedlot performance and carcass merit and no replacements are retained for the cow herd. The most common traits in terminal indexes are focused on growth, feed intake, and carcass quality traits. Examples include \$B in Angus, \$CHB in Hereford, TI in Simmental. "The terminal index allows us to not just measure the revenue but also factor in the cost, such as feed intake, to determine the index," Decker says. **Weaning/replacement index:** These are designed for commercial cow-calf production systems where calves are marketed at weaning and replacement heifers are retained. Examples include \$W in Angus and Maternal in Beefmaster. "As an industry, we haven't done a great job explaining fertility and maintenance," Decker says. "Whole-herd reporting and mature weight records help accomplish this. The goal is to include these traits in an index." **All-purpose index:** This index is focused on measurement from conception through harvest. Decker says, "the all-purpose index is the most completely described index regarding profitability, especially when one wants to develop cattle that are going to perform in the feedlot and on the rail. What differentiates the all-purpose index from the terminal index is we are assuming we are going to retain females out of these matings." Examples of an all-purpose index include \$Cow in Gelbvieh; Baldy Maternal (\$BMI) in Hereford; HerdBuilder in Red Angus and All Purpose in Simmental.

Breeding program objectives: To successfully implement selection indexes as a genetic tool in your breeding program, Bullock and Decker suggest developing a breeding objective; in other words, a genetic plan for your program, which includes factors such as management, marketing and environment. This process will allow you to identify a selection index which should most closely match your breeding program goals.

It is important for producers to take the time to study what traits are used in the calculations of selection indexes. One way is researching the indexes on breed association websites. "It's better to know what is under the hood," says Decker, rather than find out later what traits are included. And, "don't make the mistake of sitting on the sidelines." That's because, as these professors explain, if the selection index scenario doesn't perfectly match your operation, you should still consider utilizing them to help simplify selection for genetic improvement and conduct multi-trait selection. Overall, selection indexes can facilitate genetic improvement in profitability and become major elements in production/marketing systems. "They are robust," says Bullock. "Even in changing markets and varying production marketing systems, as you go from one index to another, bull rankings tend not to change drastically."

"Selection indexes might not be 100% accurate but they consistently help farms and ranches be more profitable," concludes Decker.

Gordon is a freelance agricultural writer and regular contributor to BEEF from Sioux Falls, S.D.

VESETH CATTLE Co.

Coming Attractions to the 2020 Bull Sale



MILWILLAH MARBLE BAR 53

RAA Reg. 3567871 Paringa Livestock, Australia.
\$50 USA Semen.

HB	GM	CE	BW	WW	YW	Milk	ME
154	49	15	0.3	69	106	20	-12
HPG	CEM	STAY	Marb	YG	CW	REA	BF
11	9	11	0.67	0.13	40	0.19	0.03

Top 3% cow efficiency, Top 4% CW, Top 7% CEM and Gm Index, Top 12% Marb, Top 16% DMI, Top 17% CED, top 20% WW & REA.



KL PRIME TIME TEDDY

American Shorthorn Association Reg # X4184970.
Homozygous Polled Shorthorn.

CED	BW	WW	YW	Milk	TM	CEM	ST
24	-2.3	67	98	19	53	15	18
YG	CW	REA	Marb	FT	SCEZ	\$BMI	\$F
-0.2	-13	-0.24	0.03	-0.08	75.66	168.88	62

Top 1% for Calving Ease; Calving Ease Maternal;
\$CEZ; \$BMI.

Top 10% for BWT; WW; YW; ST; \$F.



3SCC DOMAIN A163

RAA # 1619642. Bred by Sonstegard, MN
The highest maternal index in the RA data base.

HB	GM	CE	BW	WW	YW	MM	ME
297	53	17	-1.3	63	103	27	-3
HPG	CEM	STAY	Marb	YG	CW	REA	BF
20	6	26	.67	0.17	23	0.09	0.05

Top 1% for HB index and Stay. Top 2% HPG, Top 7% for GM index, top 10% for Marb, Top 12% for CED and top 22% for Milk.



WFL MERLIN 018A

RAA # 1628086 Bred by Wedel Red Angus, KS
A total performance sire.

Leachman profit index \$21,000+.

HB	GM	CE	BW	WW	YW	MM	ME
239	56	18	-4.7	82	130	20	4
HPG	CEM	STAY	Marb	YG	CW	REA	BF
11	11	18	.74	0.07	20	0.11	0.02

Top 1% for GM index; Top 2% HB index, WW' YW; top 5% Marb, Top 8% ADG, Top 9% for CED, BWT and CEM; Top 22% for REA and Top 23% for Stay.



Leachman's Dam and Grand Dam

LEACHMAN DECREE

ASA Reg # 3144373 Homozygous polled
35AR-63SM Son. Leachman profit index \$22,814.

CE	BW	WW	YW	ADG	MCE	Milk	MWW
19.7	-4.2	59.3	89.6	0.19	10.8	30.6	60.2
STAY	DOC	CW	YG	Marb	BF	REA	SHR
24	16.8	17.8	-0.27	0.71	-0.044	0.61	-0.28

Leachman Decree is in the top 1% CE, BW, MCE, Stay, DOC, Marbling and API. The top 2% for terminal index, the top 3% for Milk.

THE STEER-A-YEAR (SAY) PROGRAM



He won the carcass competition and was second in the gainout of 29 steers in 2018.

The Steer-A-Year (SAY) program at MSU allows Montana producers to directly support learning and development of the next generation of agriculturists. Producers throughout the region donate steer calves, monetary support and/ or feed. These donations allow students in the program to engage in hands-on learning of the beef industry. Students participate in applied learning experiences in courses such as beef cattle management, professional development in beef production systems, livestock management, meat science, and livestock evaluation. The donated steers are housed at MSU's Bozeman Agricultural Research and Teaching (BART) Farm, where students are responsible for everything from feeding the animals to health checks and vaccinations. Students also provide steer production data including average daily weight gain, genetic testing, carcass ultrasound measurements, and post-harvest carcass information to the ranchers who donated them. Additionally, producers that donate steers are eligible to win awards for the best initial feeder steer, the steer with the top rate of gain and best carcass. Profits from sales of the steers fund student travel and activities in the College of Agriculture. When the steers are finished, they are sold directly to MSU's Culinary Services where the meat is used for anything from large rotisserie roasts to stews in campus dining halls and university events. The steer-a-year program would like to thank all of our wonderful supporters who make this program possible. For more information contact Hannah DelCurto Wyffels, hannah.delcurto@montana.edu, 406-994-3752



SCORE ANGUS Production Sale

February 20, 2019 - Milk River Pavilion - Malta, MT - 1:00 pm



Sinclair Roy 60E4 X GDAR CJD Alliance 0714



SAV Bruiser X Sitz JLS Emulation Ext 536P



Sinclair Roy 60E4 X MC Cumber 4X13 Extra 751



Sinclair Quantum 6CR8 X PA Power Tool 9108



Sinclair Roy 60E4 X Sinclair Patriarch 3B47

Score Angus
David Score
1535 E. Strater Rd.
Malta, MT 59538
Home: 406-654-2653
Cell: 406-390-6680

Koss Angus
Kendall Koss
Malta, MT 59538
Home: 406-654-7695

VESETH CATTLE Co.



DALE & JANET VESETH

22787 Midale Road
Malta, MT 59538

FIRST CLASS

US Postage
Paid
Ballyhoo Printing
Hobson, MT



VESETH CATTLE Co.

WEDNESDAY, FEBRUARY 20, 2019



Lunch at 11:00 through 12:45 • Sale starts at 1:00 p.m.

Milk River Pavilion on Hwy 2 East of Malta, MT

All sale cattle can be seen at the
Score Feedlot.

